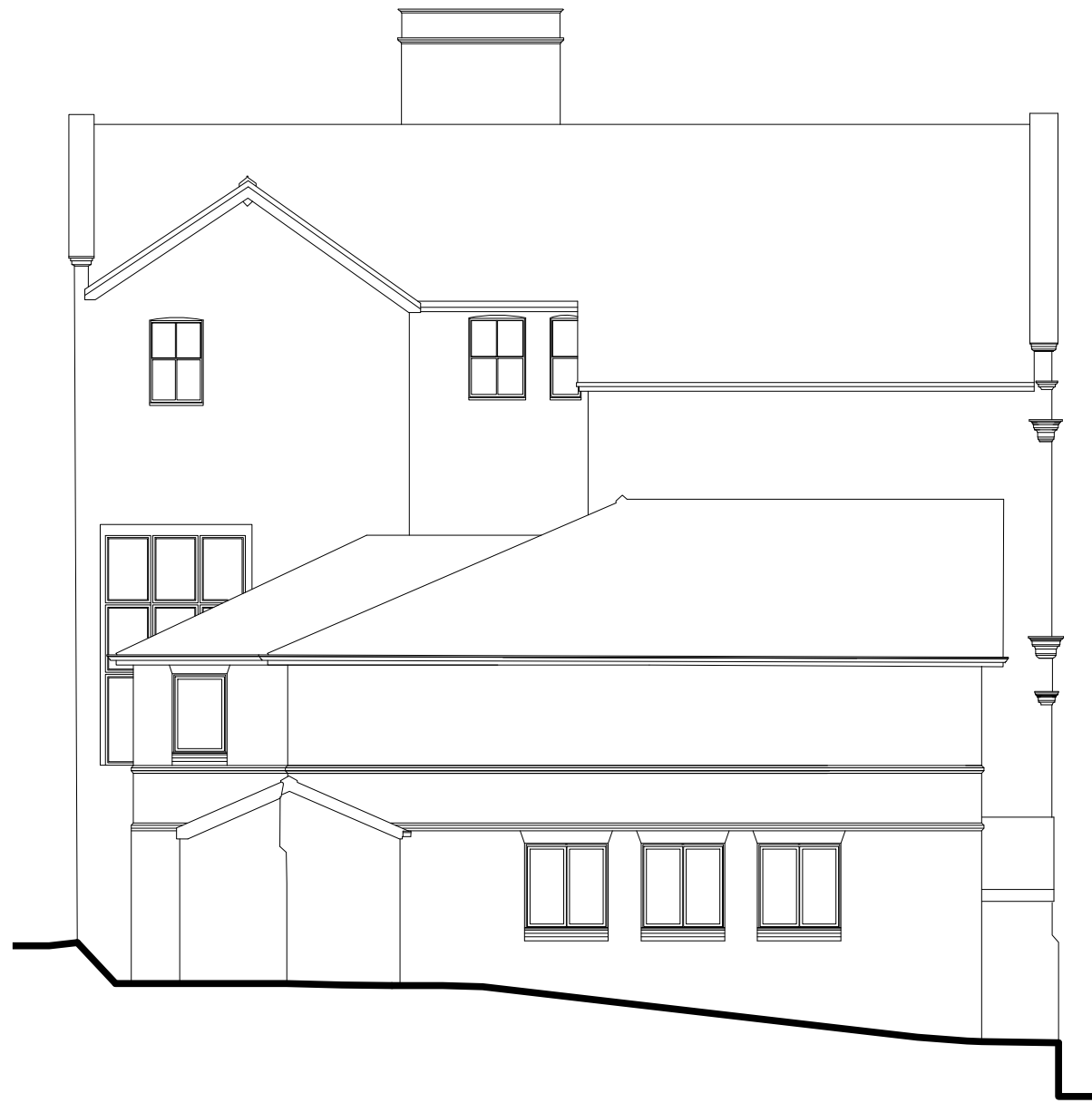




NORTH FACING ELEVATION @ 1:125



SOUTH FACING ELEVATION @ 1:125

Conversion 16 Charles Street, Newport.		Job No. 17_071	Rev.
Title North & South Facing Elevation		Dwg No. AL(00)06	
Date 03.10.17	Drawn	Scale 1:125 @ A3	
 <b>Architects</b> · Town planners Environmental & Urban design		www.cjarchitects.co.uk tel: 029 20452100	
<small>Unit 1A, Compass Business Park, Pacific Road, Cardiff, CF24 6HL.</small>			