

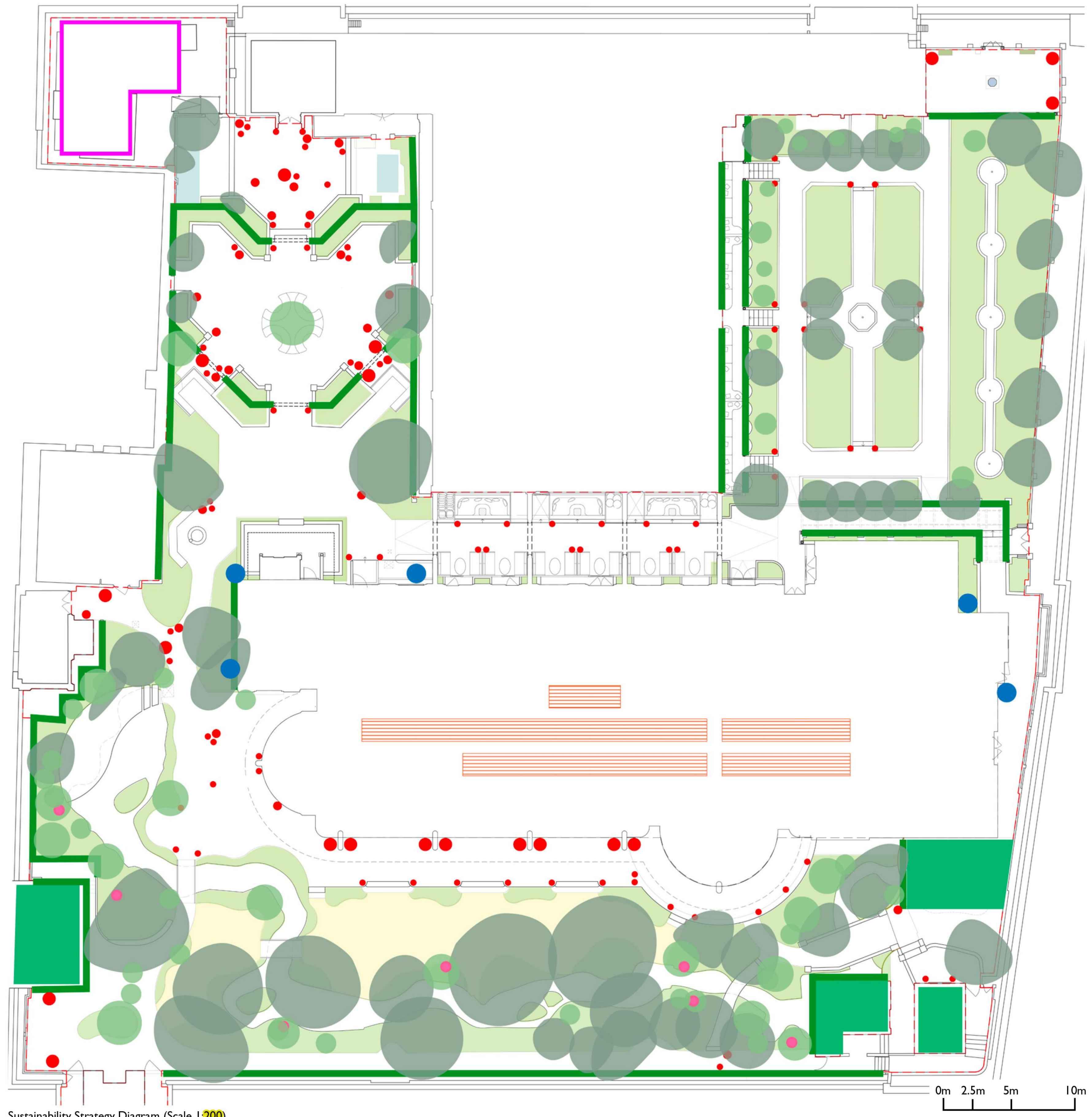
Sustainability Study

Due to the constraints of being on an existing building, with no access to structural loading information we are limited in what we can achieve, however have aimed to include as many sustainable & ecological features as possible.

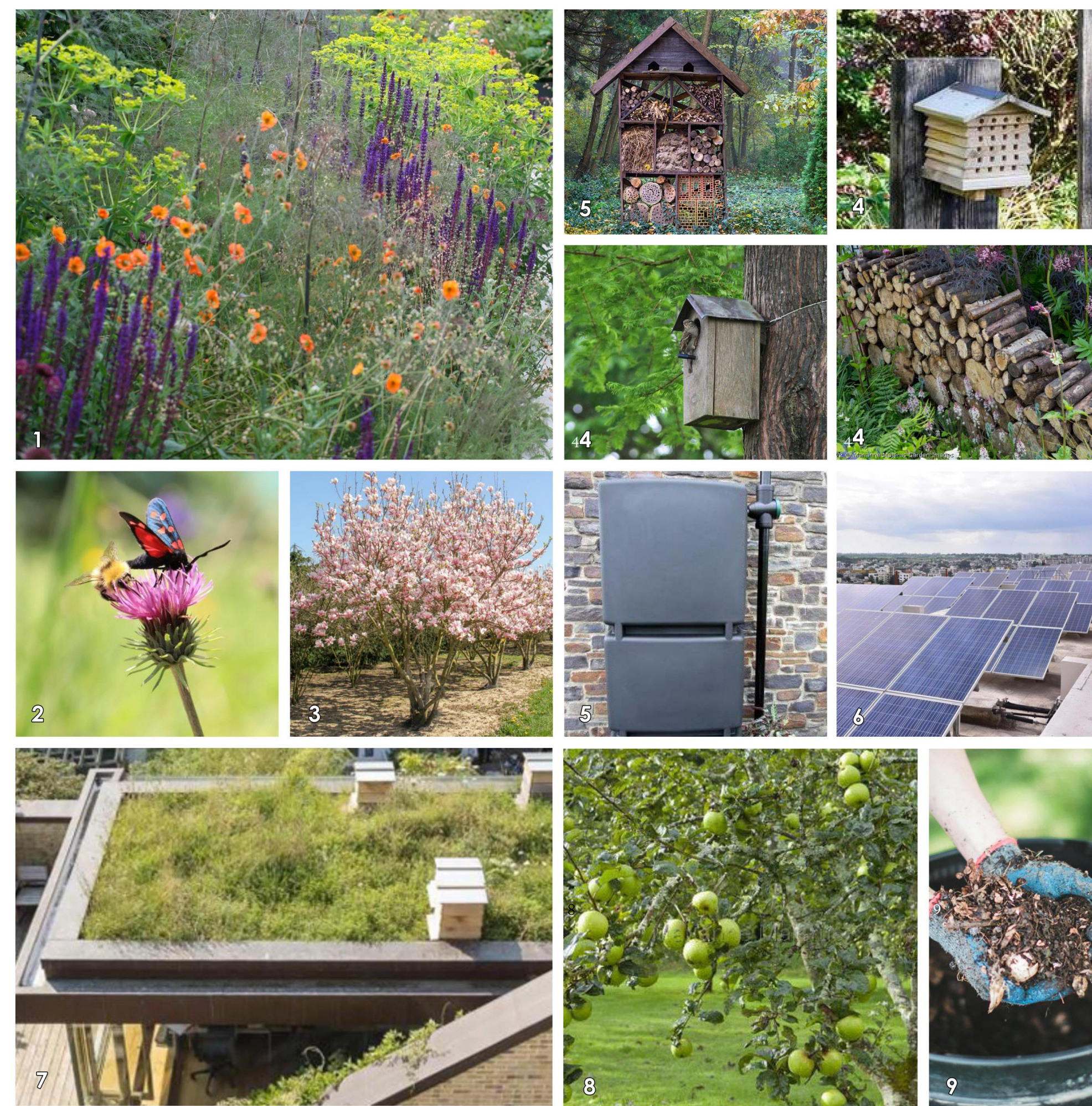
These include new tree planting, species rich lawn will replace the lawn, biodiverse wildflower green roofs have been maximised, as have vertical greening.

Additional PVs are proposed on the roof, and water butts on down pipes to collect water to be reused for irrigation.

- LEGEND**
- - - Site boundary
 - Herb Garden
 - Existing Trees
 - Proposed Trees
 - Species Rich Lawn
 - Biodiverse Green Roof
 - Climbing Plants
 - Perennial Planting
 - Ecological Features
 - Garden Shed
 - ▨ PV Panels
 - Water Butts



Sustainability Strategy Diagram (Scale 1:200)



1: Perennial planting to enhance biodiversity; 2: Pollinators attracted by flowering plants; 3: Tree planting; 4: Ecological features / insect / bug hotel, bird boxes, log piles; 5: Rainwater harvesting and drip fed irrigation; 6: Solar panels; 7: Green roofs; 8: Edibles; 9: Composting